



## AVA's Contour Mapping Services

Contour mapping is valuable to operations in agribusiness, natural resource management, construction and development.

Aerial orthographic survey and mapping delivers many key benefits. Here are just a few reasons to choose AVA to deliver your contour mapping solutions:

1. **Precise and fast.** AVA's precision mapping is captured in a fraction of the time a traditional survey would take to complete. The data is so precise we can drill down to a 1cm of accuracy.
2. **Repeatable.** Using GPS, longitudinal surveys are conducted to study changes in volumes and contours over time. Useful from resource management to large-scale construction projects, to logistical operations.
3. **Application.** Data collected can be provided in versatile formats and data layers for full integration into CAD, BIM and design systems.
4. **Access all areas.** AVA's core business is offering solutions to access remote, tight and difficult areas. Our land surveys using UAV tech allows us to generate contour maps regardless of the terrain or limited accessibility.

## A case for agribusiness

AVA was requested to deliver a contour map of a 5-acre paddock in Manjimup, Western Australia.

Using 2D orthographic and cross-hatch flight paths a full representation of the field was developed in a point cloud.

Combining the point cloud with GPS data and altitude sensors the data was interpreted to deliver an accurate contour map of the paddock using photogrammetry software.

The client intends to maximize the catchment of the dam and delivery of water to the paddock plantings. Traditional methods to obtain this information are time-consuming and the data is not as easy to share or adapt.

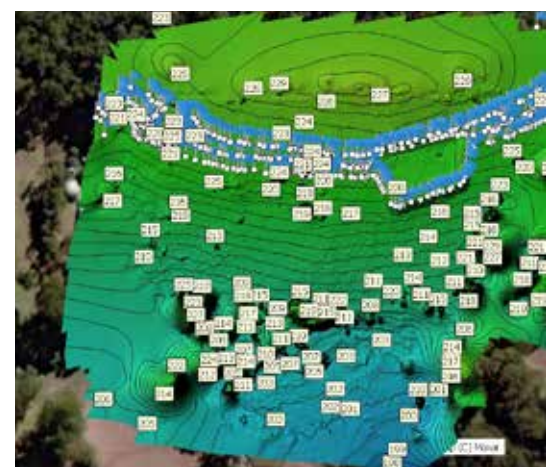
With an hour of flight time and data processed the same day, AVA shared the imagery files with the client through the free-to-use Agisoft Viewer.

Saving time and money to deliver the data is one benefit, utilising the data against a second set, delivered 12 months later, will offer an additional benefit to understanding the progress and success of the water management project.

## About AVA

AVA is at the forefront of unmanned aerial vehicle technology and services in Perth, Western Australia. We offer highly accurate, efficient and cost-effective visual scanning and inspection with world-leading 3D scanning capabilities and CASA-accredited drone technicians.

AVA has a flawless safety record, attributed to the team's experience, education, training and procedures developed to Australian Standards. AVA seeks to be the provider of choice for your difficult access requirements.



*Aerial orthographic survey with layers for contours and heat mapping.*